



Sample image

## Datasheet

**Article number:** 70131561

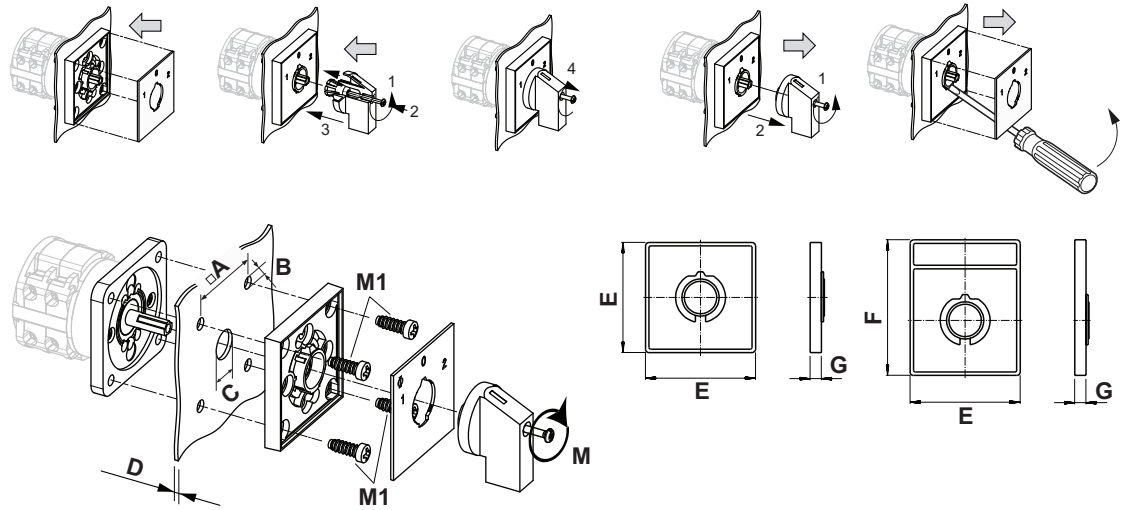
**Designation:** CA40.A211.E.AT11

**Description:** Switchgear

<b>IEC 60947-3 EN 60947-3, VDE 0660 Teil 107</b>						
<b>Rated insulation voltage Ui</b>						
Voltage (V) AC / DC						
690 50/60Hz						
<b>Rated uninterrupted current Iu/Ith</b>						
Current (A)	Ambient temperature (°C)	Peak temperature (°C)		additional requirements		
40	55	60		Ambient temperature +55°C during 24 hours with peaks up to +60°C		
<b>Rated operational current Ie</b>						
Utilization category			Voltage (V)		Current (A)	
AC-15			220 - 240		14	
AC-15			380 - 440		6	
<b>Rated operational power</b>						
Utilization category	Voltage (V)	No. of phases	No. of poles	Power (kW)		
AC-3	220 - 240	3	3	7,50		
AC-3	380 - 440	3	3	15		
AC-3	660 - 690	3	3	15		
AC-3	220 - 240	1	2	5,50		
AC-3	380 - 440	1	2	7,50		
AC-23A	220 - 240	3	3	7,50		
AC-23A	380 - 440	3	3	18,50		
AC-23A	660 - 690	3	3	18,50		
AC-23A	220 - 240	1	2	4		
AC-23A	380 - 440	1	2	7,50		
<b>Max. Fuse rating IEC</b>						
Fuse characteristic			No. of Fuses		Current (A)	
gG			1		50	
<b>UL60947-4-1 , UL508</b>						
<b>Nominal Voltage</b>						
Voltage (V) AC / DC						
600 AC						
<b>Rated insulation voltage Ui</b>						
Voltage (V) AC / DC						
600 AC						
<b>Rated thermal current</b>						
Current (A)		Ambient temperature (°C)		Additional Text		
45		0 - 40		-		
<b>Horsepower rating</b>						
Across-the-Line Motor Starting		Voltage (V)	No. of phases	No. of poles	Power (HP)	Ambient temperature [°C]
DOL		110 - 120	1	2	3	40
DOL		220 - 240	1	2	7,50	40
DOL		277 - 277	1	2	7,50	40
DOL		415 - 415	1	2	10	40
DOL		440 - 480	1	2	15	40
DOL		550 - 600	1	2	15	40
DOL		110 - 120	3	3	7,50	40
DOL		220 - 240	3	3	15	40
DOL		415 - 415	3	3	20	40
DOL		440 - 480	3	3	25	40
DOL		550 - 600	3	3	25	40
<b>Pilot duty rating code</b>						
Duty Code						
A600						
<b>SCCR / Max. fuse rating</b>						
Conditions of acceptability						
These devices are suitable for use on circuits capable of delivering not more than 5000 rms symmetrical amperes, 600V ac max. when protected by Class J fuses.						
<b>Temp. rating of wire</b>						
Temperature rating (°C)			Current (A) Text			
75			- Use copper wire only			
<b>Connecting instructions</b>						
Markings						
Break all lines.						

Connecting instructions						
<b>Markings</b>						
For use on a flat surface of a type 1 enclosure.						
When intended for use as a motor disconnecter the device shall be provided with a method of being locked in the OFF-position.						
<b>General Use</b>						
AC / DC	Voltage (V)	Current (A)	No. of phases	No. of poles	No. of contacts in series	
AC	600	45	1	2	1	
AC	600	45	3	3	1	
GENERAL TECHNICAL INFORMATION						
<b>Size of conductor</b>						
composition of conductor	Min. / Max. value	No. of conductor per terminal	Cross section (mm <sup>2</sup> ) or (AWG/kcmil)		Material of the wire	
Solid wire	Min.		2	0.75mm <sup>2</sup>	Copper	
Solid wire	Min.		1	1.5mm <sup>2</sup>	Copper	
Flexible wire	Max.		1	AWG 6	Copper	
Flexible wire	Min.		1	2.5mm <sup>2</sup>	Copper	
Flexible wire	Max.		1	10mm <sup>2</sup>	Copper	
Flexible wire	Min.		2	1.5mm <sup>2</sup>	Copper	
Single-core or stranded wire	Max.		1	AWG 6	Copper	
Single-core or stranded wire	Max.		1	16mm <sup>2</sup>	Copper	
Flexible wire with ferrule according to DIN 46228	Min.		2	0.75mm <sup>2</sup>	Copper	
Flexible wire with ferrule according to DIN 46228	Max.		1	10mm <sup>2</sup>	Copper	
Flexible wire with ferrule according to DIN 46228	Min.		1	1.5mm <sup>2</sup>	Copper	
<b>Stripping length</b>						
						Length (mm) –
						
<b>Recommended screw driver</b>						
<b>Type of screw driver</b>			<b>Value</b>			
Cross Screwdriver			PH2			
Slot screwdriver according to DIN 5264			1x5,5			
<b>Tightening torque of screws</b>						
			<b>tightening torque (Nm)</b>		<b>tightening torque (lb-in)</b>	
			1,80		16	
<b>Approbations</b>						
<b>Specification</b>						<b>Marking</b>
CE marking						
UK Directives						
<b>General Information</b>						
<b>Text</b>						
- Use only copper wires with or without tinned/silver-plated individual wires. Soldering the end of the wire before wiring is not allowed.						
- Terminals with factory fitted jumper links are tightened during production for loss prevention. When opening the terminal clamps, make sure that no factory fitted links get lost and that all wire connections are properly seated.						
- After wiring, ALL terminal screws must be tightened to the specified torque values.						
- The protection class of the selected mounting type may vary if optional extras are used.						
- Do not lubricate or treat contacts.						
- Switches may only be mounted, connected and set into operation by qualified persons according to the accepted rules of technology.						
- After installation of the switches the spacings between the terminals must be sufficient to fulfill the requirement of the applicable standards.						
<b>Waste Electrical &amp; Electronic Equipment (WEEE)</b>						
<b>Picture name</b>	<b>Description</b>					
	Do not throw in the trash as care must be taken to ensure environmentally sound disposal and recycling. Please either use an environmentally friendly waste disposal company; return to the supplier for disposal; or return direct to the manufacturer, Kraus & Naimer. You can find local Kraus & Naimer offices at <a href="http://www.krausnaimer.com">www.krausnaimer.com</a>					
<b>Proposition 65</b>						
<b>Picture name</b>	<b>Description</b>					
	WARNING: This product can expose you to chemicals including nickel and lead, which is known to the State of California to cause cancer. For more information go to <a href="http://www.P65Warnings.ca.gov">www.P65Warnings.ca.gov</a> .					
Classification Contact: Rigid contact bridge						
Classification Contact Mat: Silver						
Classification Terminal: Screw terminal						

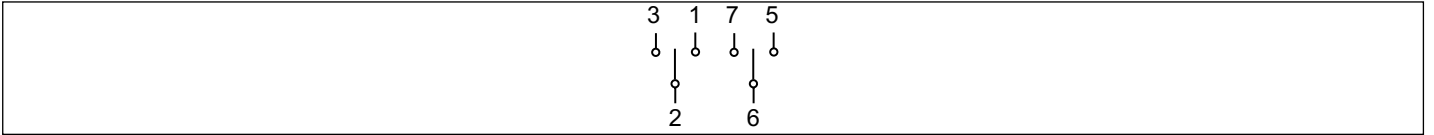
Mounting-E



IP - Code front side	IP40
Stages	1,00 - 12,00
A	□ 48,00 mm
B	∅ 5,00 mm
C	∅ 10,00 - 22,00 mm
D	H ≤ 4,00 mm
E	H 64,00 mm
F	H 78,00 mm
G	H 7,40 mm
M	↻ 0,70 Nm
M1	↻ 0,90 Nm

## Wiring diagram

CA40.A211.E



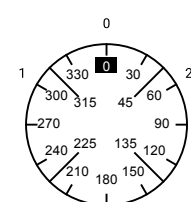
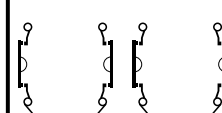
# Switch program

CA40.A211.E

CA40

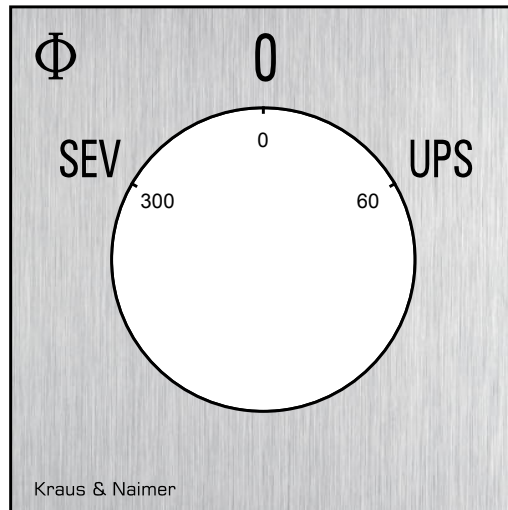
A211

Page 1 of 1

Face Plate		1	3	5	7	9	11	13	15	17	19	21	23																																														
																																																											
Switching Angle	60	2	4	6	8	10	12	14	16	18	20	22	24																																														
Total switching Angle	120																																																										
1	300		■		■																																																						
	315																																																										
	330																																																										
	345																																																										
0	0																																																										
	15																																																										
	30																																																										
	45																																																										
2	60	■		■																																																							
	75																																																										
	90																																																										
	105																																																										
	120																																																										
	135																																																										
	150																																																										
	165																																																										
	180																																																										
	195																																																										
	210																																																										
	225																																																										
	240																																																										
	255																																																										
	270																																																										
	285																																																										
		<p style="text-align: center;">Jumpers</p> <table style="width: 100%; border: none;"> <tr> <td>1 ●</td><td>● 3</td><td>4 ○ — ● 2</td></tr> <tr> <td>5 ●</td><td>● 7</td><td>8 ○ — ● 6</td></tr> <tr> <td>9 ○</td><td>○ 11</td><td>12 ○</td><td>○ 10</td></tr> <tr> <td>13 ○</td><td>○ 15</td><td>16 ○</td><td>○ 14</td></tr> <tr> <td>17 ○</td><td>○ 19</td><td>20 ○</td><td>○ 18</td></tr> <tr> <td>21 ○</td><td>○ 23</td><td>24 ○</td><td>○ 22</td></tr> <tr> <td>25 ○</td><td>○ 27</td><td>28 ○</td><td>○ 26</td></tr> <tr> <td>29 ○</td><td>○ 31</td><td>32 ○</td><td>○ 30</td></tr> <tr> <td>33 ○</td><td>○ 35</td><td>36 ○</td><td>○ 34</td></tr> <tr> <td>37 ○</td><td>○ 39</td><td>40 ○</td><td>○ 38</td></tr> <tr> <td>41 ○</td><td>○ 43</td><td>44 ○</td><td>○ 42</td></tr> <tr> <td>45 ○</td><td>○ 47</td><td>48 ○</td><td>○ 46</td></tr> </table>												1 ●	● 3	4 ○ — ● 2	5 ●	● 7	8 ○ — ● 6	9 ○	○ 11	12 ○	○ 10	13 ○	○ 15	16 ○	○ 14	17 ○	○ 19	20 ○	○ 18	21 ○	○ 23	24 ○	○ 22	25 ○	○ 27	28 ○	○ 26	29 ○	○ 31	32 ○	○ 30	33 ○	○ 35	36 ○	○ 34	37 ○	○ 39	40 ○	○ 38	41 ○	○ 43	44 ○	○ 42	45 ○	○ 47	48 ○	○ 46
1 ●	● 3	4 ○ — ● 2																																																									
5 ●	● 7	8 ○ — ● 6																																																									
9 ○	○ 11	12 ○	○ 10																																																								
13 ○	○ 15	16 ○	○ 14																																																								
17 ○	○ 19	20 ○	○ 18																																																								
21 ○	○ 23	24 ○	○ 22																																																								
25 ○	○ 27	28 ○	○ 26																																																								
29 ○	○ 31	32 ○	○ 30																																																								
33 ○	○ 35	36 ○	○ 34																																																								
37 ○	○ 39	40 ○	○ 38																																																								
41 ○	○ 43	44 ○	○ 42																																																								
45 ○	○ 47	48 ○	○ 46																																																								
		Version: 112																																																									

## Face plate

S1.F990/A1B.PEL.F\*DK7017



## HANDLES

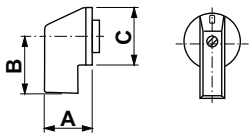
**Designation:** S1B.G251

**Handle colour:** "1" black

### GENERAL TECHNICAL INFORMATION

#### Recommended screw driver

Type of screw driver	Value
Cross Screwdriver	PH1
Slot screwdriver according to DIN 5264	0,8x5,5



A	27,00 mm	B	31,80 mm	C	36,00 mm
---	----------	---	----------	---	----------